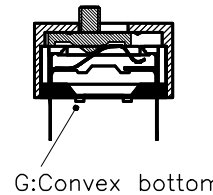
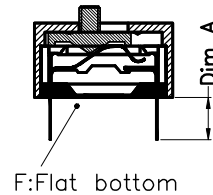
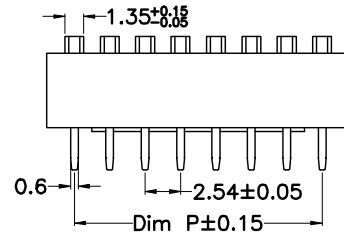
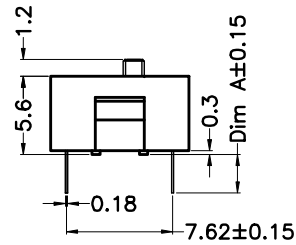
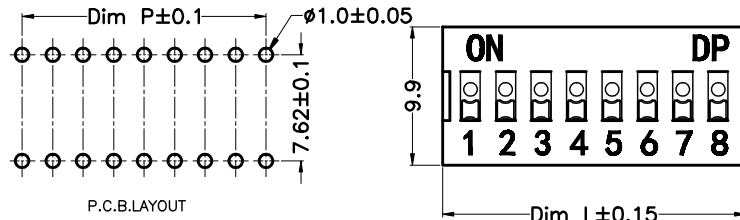


REV.	DESCRIPTION	DATE	DRAWN	APPROVED
A1	DWG.REL	2016/10/7	FANG	YANG

Poles	1P	2P	3P	4P	5P	6P	7P	8P	9P	10P	12P
Dim P	--	2.54	5.08	7.62	10.16	12.70	15.24	17.78	20.32	20.86	27.94
Dim L	3.96	6.50	9.04	11.58	14.12	16.66	19.20	21.74	24.28	26.82	31.90

Dim A	S:Short pin	L:Long pin
G:Convex bottom	2.7mm	3.5mm
F:Flat bottom	3.0mm	3.8mm



Material:

- 1、 Base: UL94V-0 PBT Thermoplastic, black
- 2、 Cover: UL94V-0 PBT Thermoplastic, red, blue
- 3、 Button: UL94V-0 PA66 Thermoplastic, white
- 4、 Terminal: Phosphor Bronze ,Gold plating.

Mechanical:

- 1、 Operating force: 8N<max>
- 2、 Stroke: 2.00mm
- 3、 Operation temp: -20 ℃ ~ 70 ℃
- 4、 Storage temp: -40 ℃ - 85 ℃

Electrical:

- 1、 Electrical life: 2000 operations per switch 24VDC,25mA
- 2、 Non- switching rating: 100mA,50VDC.
- 3、 Switching rating: 25mA,50VDC.
- 4、 The contact impedance (A: initial value of the maximum 50m (Ω, B testing after the maximum 100m
- 5、 Insulation resistance: (at 500VDC)100mΩ min
- 6、 Dielectric strength: 500VAC/1minute.
- 7、 Capacitance: Max 5pF.
- 8、 The loop: single contact single selection

SOLDERING AND CLEANING PROCESSES:

- 1、 For best results, please follow these recommendation: keep all switch contacts in their "OFF" position for all operations.
- 2、 Wave soldering: recommended solder temperature at 250 ± 5 ℃, 3~5 seconds.
- 3、 Hand welding: use 30 watt iron control temperature at 320 ℃, the welding time is about 2 seconds.
- 4、 Cleaning: cleaning process using ultrasonic method, can give better results, use steam mode, temperature should not exceed 51 ℃.

HOW TO ORDER

KF1001-XXP-XX-X X-XXX-XX X

MODEL

No. of poles:  
1~12P

R0:Red  
R3:Light red  
B0:Blue  
K0:Black

G:Convex bottom  
F:Flat bottom

Customer Request

L:Long pin  
S:Short pin

Explain:

- 1, general tolerance: 10mm or more - + 0.2mm. Less than 10mm - + 0.1mm.
- 2, material and performance see accessories.

GENERAL TOLERANCE		ANGLE TOLERANCE	
X.	±0.5	X°	±5°
.X	±0.3	.X°	±3°
.XX	±0.1	.XX°	±1°

DRAWING TYPE	CUSTOMER		
SCALE	1:1	SHEET	1 OF 1
DRAWING NO.	XP0012016-xxxx		

PROJECTION	TITLE
UNITS	KF1001-XXP-XX-XX-DP
SHEET SIZE	SERIES Upright type flat dial switch

**DF** 慈溪市凯峰电子有限公司  
KAI FENG ELECTRONIC CIXI KAIFENG ELECTRONIC CO.,LTD