



Thermal Fuse Series

KLS5-KSD301 Thermal Fuse Series

SPECIFICATION:

Electrical Rating:

10A 250V AC (Resistive Load)

15A 250V AC (Resistive Load)

Operating Temp: 50~175°C (UL, CUL 205°C)

Differential: 10~30K (15K Standard)

Temp Tolerance: Operating Temp ±3K ±5K

Heat Durability: 220°C Max. (PPS)

Contact Resistance: 50mΩ Max.

Insulation Resistance: 100MΩ Min. at DC 500V

Dielectric Strength: AC 1000V for One Minute.

Operating Life: 100000 Cycles (10A 250V)

10000 Cycles (15A 250V AC)



Contact Type :

A = Contact Opens When Temperature Rises to Set Point (Normally Closed)



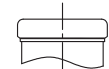
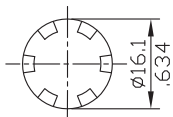
B = Contact Closes When Temperature Rises to Set Point (Normally Open)



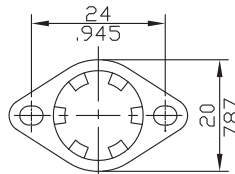
Bracket Type:

● FIXED BRACKET

* STAINLESS STEEL CAP : D, DL, V, T TYPE



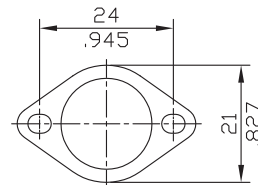
C TYPE



B TYPE

● LOOSE BRACKET

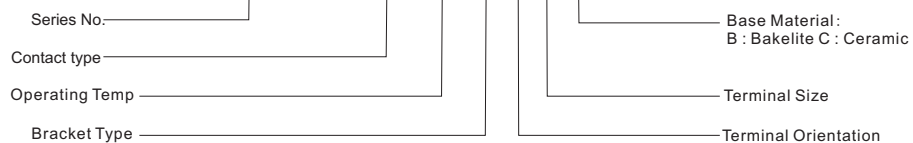
* STAINLESS STEEL CAP : U TYPE



U TYPE

ORDER INFORMATION

Product NO.: **KLS5-KSD301-A-110 C D 1 B**



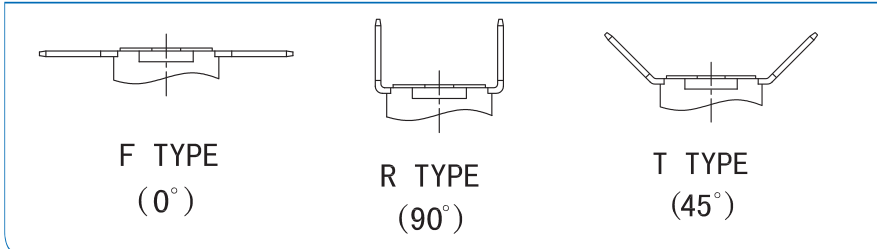
FUSE AND FUSE HOLDER



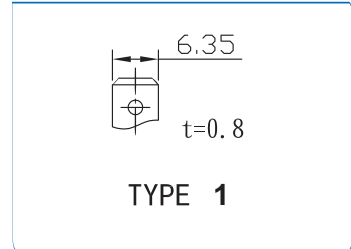
Thermal Fuse Series

KLS5-KSD301 Thermal Fuse Series

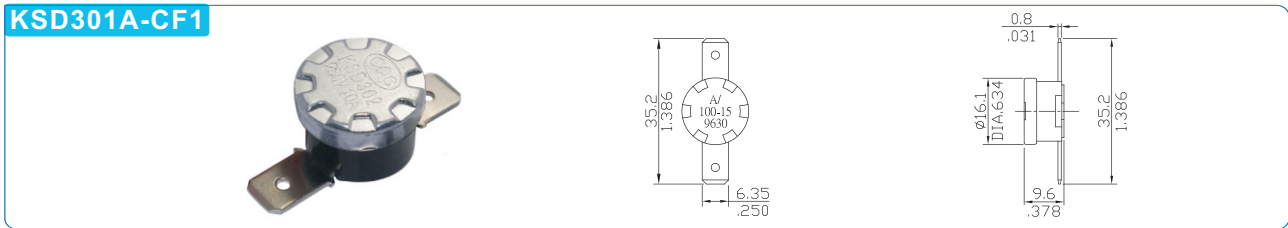
Terminal Orientation:



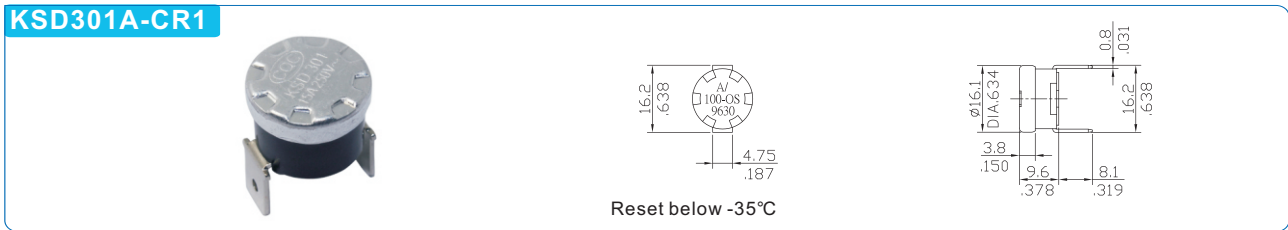
Terminal Size:



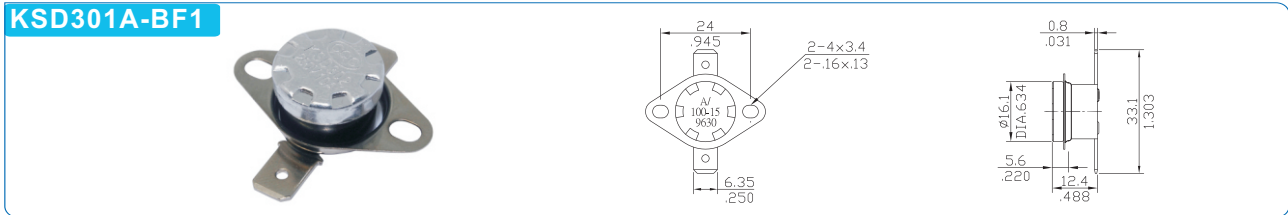
KSD301A-CF1



KSD301A-CR1

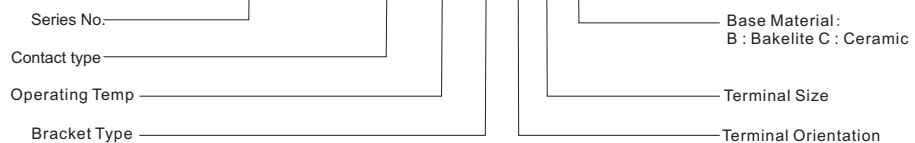


KSD301A-BF1



ORDER INFORMATION

Product NO.: **KLS5-KSD301-A-110 C D 1 B**



Thermal Fuse Series

KLS5-KSD301 Thermal Fuse Series

Action and Reset temperature

Action temperature	Reset temperature	Action temperature	Reset temperature
45±5 °C	40±6 °C	130±5 °C	100±15 °C
50±5 °C	43±6 °C	135±5 °C	105±15 °C
55±5 °C	45±6 °C	140±5 °C	110±15 °C
60±5 °C	50±6 °C	145±5 °C	115±15 °C
65±5 °C	50±6 °C	150±5 °C	120±15 °C
70±5 °C	50±6 °C	155±5 °C	125±15 °C
75±5 °C	55±6 °C	160±5 °C	130±15 °C
80±5 °C	55±6 °C	165±5 °C	135±15 °C
85±5 °C	55±6 °C	170±5 °C	140±15 °C
90±5 °C	60±6 °C	175±5 °C	145±15 °C
95±5 °C	65±6 °C	180±5 °C	150±15 °C
100±5 °C	75±6 °C	185±5 °C	160±15 °C
105±5 °C	80±6 °C	190±5 °C	165±15 °C
110±5 °C	80±6 °C	200±5 °C	170±15 °C
115±5 °C	85±6 °C	210±5 °C	175±15 °C
120±5 °C	90±6 °C	215±5 °C	180±15 °C
125±5 °C	95±6 °C	220±5 °C	185±15 °C

The specification can also be manufactured as request.

Test Method:

Sample is connected to the fixture of the equipment, and placed into the test equipment (Hot current of air in the space of test should be equipped with a stirrer and temperature is controllable). A detect current about 10mA (no more than 100mA) is passed through the sample and a thermometer is placed junction to the sample to monitor the opening temperature. The temperature of the test equipment is raised at the rate of 0.5~1 °C per minute until the sample functioned.

ORDER INFORMATION

Product NO.: KLS5-KSD301-A-110 C D 1 B

